

we VIBE



Bond

Wearable stimulation ring

Wearable anywhere and controlled by app or remote, Bond allows you to make the anticipation of sex as good as sex itself and connects you directly to your pleasure.

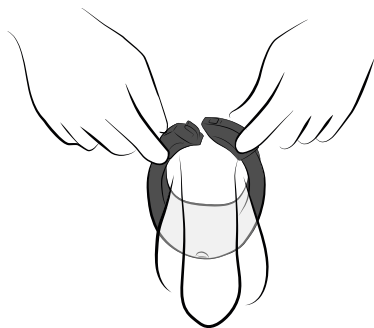
What is it

Take pleasure out of the bedroom. Be in complete command of your pleasure, or share control. Either way, the result is an incredibly sexy feeling, made safe and discreet by Bond's precision engineering, easy-on quick-release design and custom fit. This wearable stimulation ring, controlled by app or remote, celebrates the bond between sexual partners, and emphasizes the importance of curious, adventurous intimacy. Wear Bond beneath your clothes to make every moment pleasurable, and use it to build up to a more exhilarating experience.

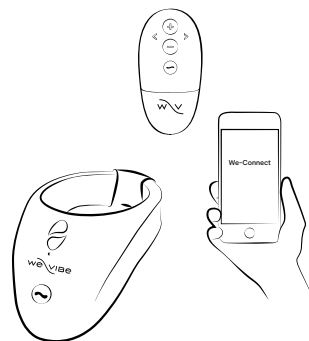
Who it's for

Bond is for hetero- and homosexual couples and penis owners who are experienced pleasure seekers. Sexually literate, adventurous male body persons looking not just for new sensations, but new ways to experience sensations.

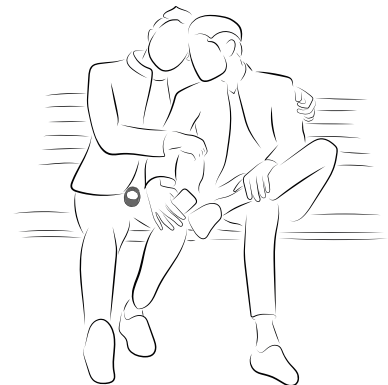
How to play



1. Wrap the silicone band around the penis and testicles and close the clasp. The ring size is 35mm but this can be extended using the Custom Fit link if necessary.



2. Start by pressing the We-Vibe button. Explore 10 different intensity levels using the remote or the app.



3. Perfectly shaped for comfortable, discreet play, Bond can be worn in public, and controlled with the app for undercover teasing. Bond extends foreplay and builds anticipation but is not meant to bring the wearer to climax.

How to control

When playing in the same room, use the convenient remote to change vibration pattern modes as well as the intensity from a distance of up to 3 meters. Bond can also be controlled by the We-Connect app. Enjoy pleasure over any distance. Both you and your partner download the We-Connect app to your smartphones.

Bond is paired to the phone that remains within Bluetooth® range of the vibrator. Add your partner to share control with an invite from the app. Please note that Bond cannot be paired with both the We-Vibe remote and the We-Connect app simultaneously: pair with one at a time.

Features

- Custom Fit
- Wearable
- Remote control
- Ergonomic shape
- 10 intensity levels
- We-Connect app
- Super-soft silicone
- Waterproof (IPX7)
- 90 minutes charge
- Up to 2 hours of play
- Whisper quiet
- Low power alert
- Rechargeable

Product and USP descriptions

All Under Control

Be in complete command of your arousal anywhere, anytime – or submit control to a partner with the We-Connect app or the We-Vibe remote.

Easy Come, Easy go

The easy-on quick-release system makes you ready for any situation.

Custom Tailoring

With the Custom Fit link you can easily choose between two sizes.

The Everyday Ring

Teasing to-go with comfort and safety.

Vibration modes



Low



Medium



Pulse



Wave



Tease



Massage



High



Ultra



Tempo



Ramp

Plus bonus modes in the We-Connect app.



How to demo Bond

- 1 Set the scene** – Go over scenarios in which Bond can be used. For example, for stimulation of the penis during the workday, during a romantic dinner, or while on the go. Bond applies pressure and vibrations to the perineum area for discreet teasing.
- 2 Bond is app-controlled** – So either the wearer or their partner can cycle through intensity settings for discreet, undercover fun.
- 3 Power up** – Press the button to power on.
- 4 Adjusting intensity** – Mention that there are three ways to increase intensity: users can control vibrations using the free We-Connect app or the remote control, as well as using the button on the toy itself. Demonstrate the 10 intensity levels. Mention this provides a lot of variety for solo and partner play.
- 5 Shape and design** – Highlight that Bond has a specially developed fit so that it's comfortable and discreet to wear, even on the go. Note the soft silicone surface and adjustable fit. You can walk, swim, run, sit or lay down with Bond because it's so comfortable. Bond is not designed to bring the wearer to orgasm, but to make the wearer feel teased and aroused, prolonging and enhancing anticipation.
- 6 Easy to put on and take off** – Bond's easy-on quick-release system means that it's simple to wear and remove, unlike many penis rings that can be difficult to take off.
- 7 Waterproof rating** – Note that Bond is also IPX7 waterproof – meaning it can be enjoyed in the bathtub, and is easy to clean.
- 8 We-connect app control** – Explain that Bond is app-enabled, meaning the toy can be controlled via the We-Connect app during dates or chores, even over distance, for hands-free fun.
- 9 Power off and charging** – Press and hold the button to turn Bond off. Note that Bond can be recharged via the magnetic charging pins.

Product specs

Colors:



Charcoal Black

SKU:

SNNS1007

EAN:

4251460615655

Battery type:

USB rechargeable lithium-ion battery

Material:

ABS and Body-safe silicone, produced without phthalates, BPA or latex.

Product dimensions:

7,8 x 4,4 x 4,8 cm

Product weight:

0,085 kg

Packaging dimensions:

16,1 x 9,8 x 7,3 cm

Unit weight:

0,29 kg

Case dimensions:

35,8 x 25,8 x 23,8 cm

Case weight:

3,86 kg

Case count:

12

HS Tariff:

9019.10

Warranty:

2 Years

Box contains:

We-Vibe Bond wearable stimulation ring, We-Vibe remote, USB power cable (AC adaptor not included), Custom Fit link, storage bag, quick start guide and safety instructions

